

UTAH ARCHAEOLOGY SITE FORM

PART A – Administrative Data

- 1. Smithsonian Trinomial: 42GR7591
- 2. Temporary Site No.: R2
- 3. Site Name: Cisco Springs Road

- 4. Date Recorded: 09/01/2020
- 5. Type of Recording:  First Recording  Full Re-record  Update
- 6. Project Name: A Cultural Resources Inventory of the Cisco Spring 2D Seismic Project in Grand County, Utah
- 7. State Project Number: U20HP0585
- 8. Land Status: BLM (Moab Field Office); Private
- 9. USGS 7.5' Quad Map Name and Date: Cisco Springs (1970); Danish Flat (1970)
- 10. Township: 20 S, Range: 23 E, Section(s): 12-15, (1/4): Linear County: Grand  
Township: 20 S, Range: 24 E, Section(s): 7-10 and 16

- 11. Meridian:  Salt Lake  Uintah
- 12. UTMS: Zone 12 642223 mE 4326085 mN (west end) NAD: 83  
650969 mE 4326441 mN (east end)
- 13. Site Dimensions: Length: 8,792 m Width: 4.25 m Area: 38,734 m2  GIS  Estimate

- 14. Site Class<sup>a</sup>:  Prehistoric  Protohistoric  Historic

- 15. Site Type: Prehistoric/Ethnohistoric Historic
  - Long-Term Residential  Task Specific  Domestic  Transportation/Communication
  - Temporary Camp  Specialty Site  Agriculture/Subsistence  Defense
  - Unknown (sites in which the primary pattern of Use is prehistoric or ethnohistoric, but the nature of Use cannot be confidently determined)  Industry/Processing/Extraction  Unknown
  - Other  Other<sup>b</sup> Recreation

- 16. Site Characteristics<sup>a</sup>:  Artifact Scatter  Rock Art/Inscription  Lithic Source/Quarry  Rock Shelter/Cave  
 Architectural Feature(s)  Non-Architectural Feature(s)  Linear

- 17. Impacting Agents:  None  Erosion  Livestock Concentration  Recreation  Road/Trail  Vandalism/Looting  
 Other: Regular maintenance of road

- 18. Site Condition:  Stable  Deteriorating  Imminently Threatened  Destroyed  
Description (as needed): This site is an historic road alignment. The road has gone through varying periods of use and has portions that are in stable condition and continual use as well as portion that have been abandoned (east end).

- 19. Recorded by: Sandy Chynoweth Pagano 21. Organization: Commonwealth Heritage Group, Inc. (CHG)

- 22. Material Collected:  No  Yes (describe in Site Description) Repository: N/A

NRHP Evaluation

- 23. Is the Site Significant:  No  Yes, under criterion<sup>a</sup>:  
 A (event)  B (person)  C (design/construction)  D (important information)

- 24. Does it Retain Integrity:  No  Yes, aspects present<sup>a</sup>:  
 Location  Design  Setting  Materials  Workmanship  Feeling  Association

- 25. NRHP Status:  Not eligible  Eligible  Listed

26. Justification (include discussion of historic context, significance, and integrity): This site consists of a road that provides local access within Danish Flat. The site retains integrity of setting, materials, feeling, association and some of its location with part of the road being redirected in modern times to serve oil and gas needs. This site cannot be associated with and important person, nor is it an integral part of a broad pattern of history. The site does not represent a specific type or method of construction. Further it is not likely to contain intact cultural deposits at depth that could yield information important to the history of the area. Therefore, this site is recommended Not Eligible to the NRHP under any Criteria.

27. Site Description (interpretation, context, size, artifact and feature assemblage, dating, previous works and curation, etc.): This site is a historic road corridor. The road measures about 5½ miles and travels due east across Danish Flat. The eastern end of the segment has been mostly abandoned and fades out east of the recorded segment near an abandoned oil well. It averages 14 ft wide and is slightly lower than the surrounding landscape. The majority of the road is maintained as a 2-track/dirt road from the area of the Danish Flat evaporation ponds to the western end of Danish Flat. Currently the road provides access to the Danish Flat oil fields as well as a cell tower just south of the evaporation ponds (both built in ca. 2008).

<sup>a</sup>Check all that apply

<sup>b</sup>See manual for additional categories

1. Smithsonian Trinomial: 42GR7591
2. Temporary Site No.: R2

The road is depicted on a 1925 GLO map for T20S R4E but does not show on the 1913 GLO map for T20S R24E (GLO 1913, 1925), suggesting the road was constructed sometime between 1913 and 1925. The road is not depicted on the 1970 USGS quadrangles except for 1¼ miles running the section line between Sections 8 and 17 in T20S R24E. This suggests the early route was abandoned after its early use and the corridor appears to have had a second phase of use after 1970. The 1925 GLO shows the road as a branch of the “Cisco Springs to Pike’s Peak Ocean to Ocean Highway” (GLO 1925); however, there are at least three other roads in the area shown with the same name. Highway Associations began forming around the time the automobile became popular, and the Pikes Peak Ocean to Ocean Highway (PPOO) organized in 1914 to promote a route from New York City to San Francisco (Weingroff 2017). The main travel corridor associated with the PPOO passes through Cisco (the town), about 8 miles south of Cisco Springs. The roads shown on this historic GLO map are variations that lead off the main travel route, possibly utilized by travelers for access to water springs or campsite locations. The main PPOO travel corridor later became US6/50 after Federal Highway Act of 1921 prompted the Bureau of Public Roads to create the federal highway numbering system. The PPOO Association continued advertising efforts, but the age of the named trails fizzled out by the 1930s.

The 1925 GLO map depicts a small network of roads connecting several residences in an historic farming community on Danish Flat. The community was settled starting in the mid-1910s and lasted until around 1930 (Salmon 2004:21-24). The main use of this road likely coincided with the active years of the community.

- 28. Environmental Context** (topography, vegetation, ground visibility, depositional context): This linear site branches off another historic road corridor approximately 1.0 mile south and east of Cisco Springs. The road travels across Danish Flat, a broad mesa below the Book Cliffs and north of the Colorado River. Elevation is 4,740 ft ASL at the west end and gradually slopes down to 4,600 ft ASL at the eastern end. Vegetation along the segment is a shadscale community with sparse low grasses. Ground visibility adjacent to the site varies along the length of the corridor.
- 29. Notes Regarding Access** (as needed): Access the site 2.54 miles north of the Danish Flat off-ramp at I-70 (Exit 214).
- 30. Additional Part A Comments:**

### References:

Firmage, Richard A.

1996 *A History of Grand County*. Utah State Historical Society, Utah Centennial County History Series. Salt Lake City.

Government Land Office [GLO]

1913 Plat Map for T 20S R 24E, Salt Lake Base & Meridian. Electronic document, accessed 8/24/2020, [https://glorerecords.blm.gov/details/survey/default.aspx?dm\\_id=338572&sid=xioddhse.pqi](https://glorerecords.blm.gov/details/survey/default.aspx?dm_id=338572&sid=xioddhse.pqi)

1925 Plat Map for T 20S R 23E, Salt Lake Base & Meridian. Electronic document, accessed 8/24/2020, [https://glorerecords.blm.gov/details/survey/default.aspx?dm\\_id=339001&sid=0a5wavum.y21](https://glorerecords.blm.gov/details/survey/default.aspx?dm_id=339001&sid=0a5wavum.y21)

Salmon, Rusty

2004 Marris and Danish Flats – Strange Names in a Strange Land. In *Canyon Legacy: Ghosts of Grand County, Northeast, Vol. 51 (20-24)*. Journal of the Moab Museum. Managing editor Rusty Salmon. Moab, Utah.

United States Geological Survey (USGS)

1970 *Danish Flat, Utah*. USGS 7.5' Topographic Quadrangle. U.S. Department of the Interior, Geological Survey.

1970 *Cisco Springs, Utah*. USGS 7.5' Topographic Quadrangle. U.S. Department of the Interior, Geological Survey.

<sup>a</sup>Check all that apply

<sup>b</sup>See manual for additional categories

# UTAH ARCHAEOLOGY SITE FORM

## PART A – Administrative Data

1. **Smithsonian Trinomial:** 42GR7591
2. **Temporary Site No.:** R2

Weingroff, Richard F.

2017 *The Pikes Peak Ocean to Ocean Highway: The Appian Way of America*. U.S. Department of Transportation, Federal Highway Administration. Electronic document, accessed 9/21/2020, <https://www.fhwa.dot.gov/infrastructure/pikes.cfm>.

<sup>a</sup>Check all that apply

<sup>b</sup>See manual for additional categories

1. **Primary date of site use:** ca.1910s – 1930s

2. **Secondary dates of site use:** 1970s-current

3. **Architectural Features:**

Type	Description

4. **Non-Architectural Features:**

Type	Description
Trail/Road	Graded and graveled road

5. **Feature Comments:** This site is an historic road corridor. The corridor runs for about 6 miles across Danish Flat from the Cisco Springs area to a junction with another historic road near I-70, north of Cisco, Utah. The abandoned road is faintly visible alongside the current modern alignment. It averages about 25 ft wide and is slightly lower than the surrounding landscape. The

6. **Cans – Total Quantity:** N/A

Quantity	Type	Description

7. **Can Comments:**

8. **Glass Bottles – Total ENV:** N/A

ENV	Manufacturing Method	Description

9. **Glass Bottle Comments:** N/A

10. **Ceramics – Total ENV:** N/A

ENV	Ware	Description

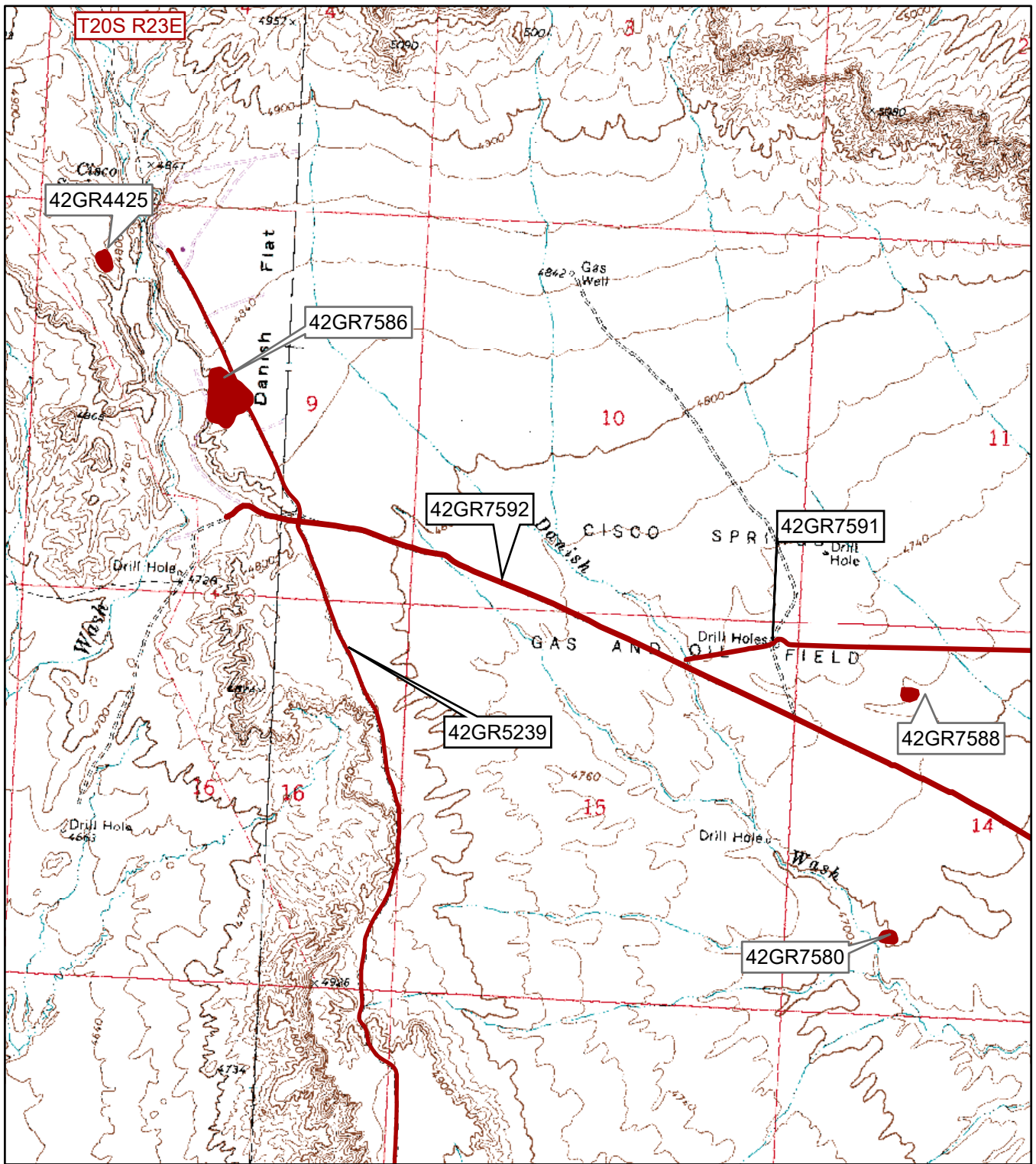
11. **Ceramic Comments:**

12. **Additional Artifacts/Debris:**

- Ammunition/Firearms     Car/Car parts     Glass (non-bottle)     Nails (wire)     Toys
- Bone     Ceramics (non-tableware)     Hardware     Plastic     Other
- Building Materials     Clothing     Nails (cut)     Stove Parts

13. **Additional Artifact/Debris Description:** N/A

14. **Additional Part C Comments:**



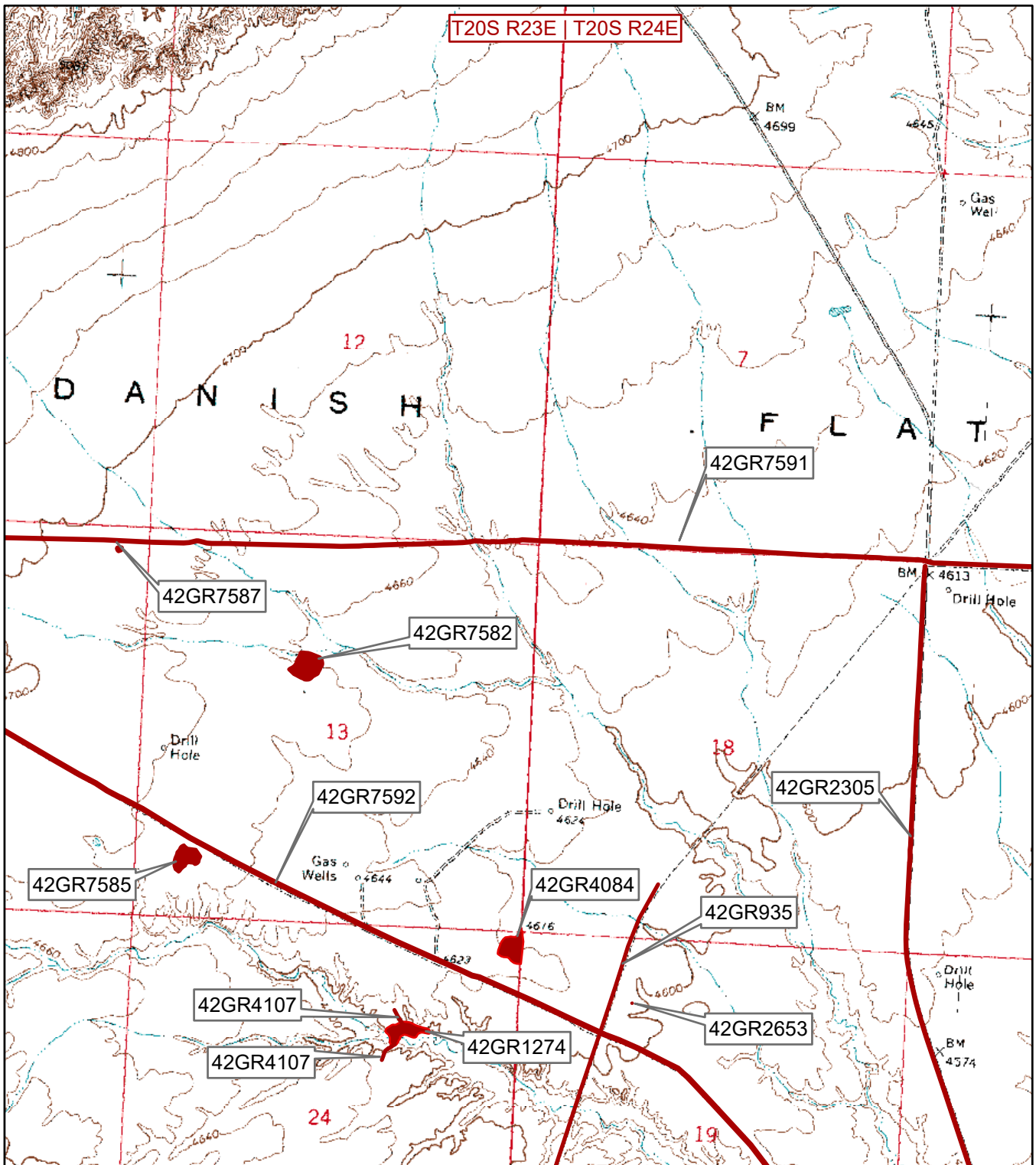
N



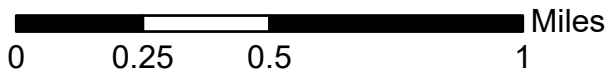
1:24,000

0 0.25 0.5 1 Miles

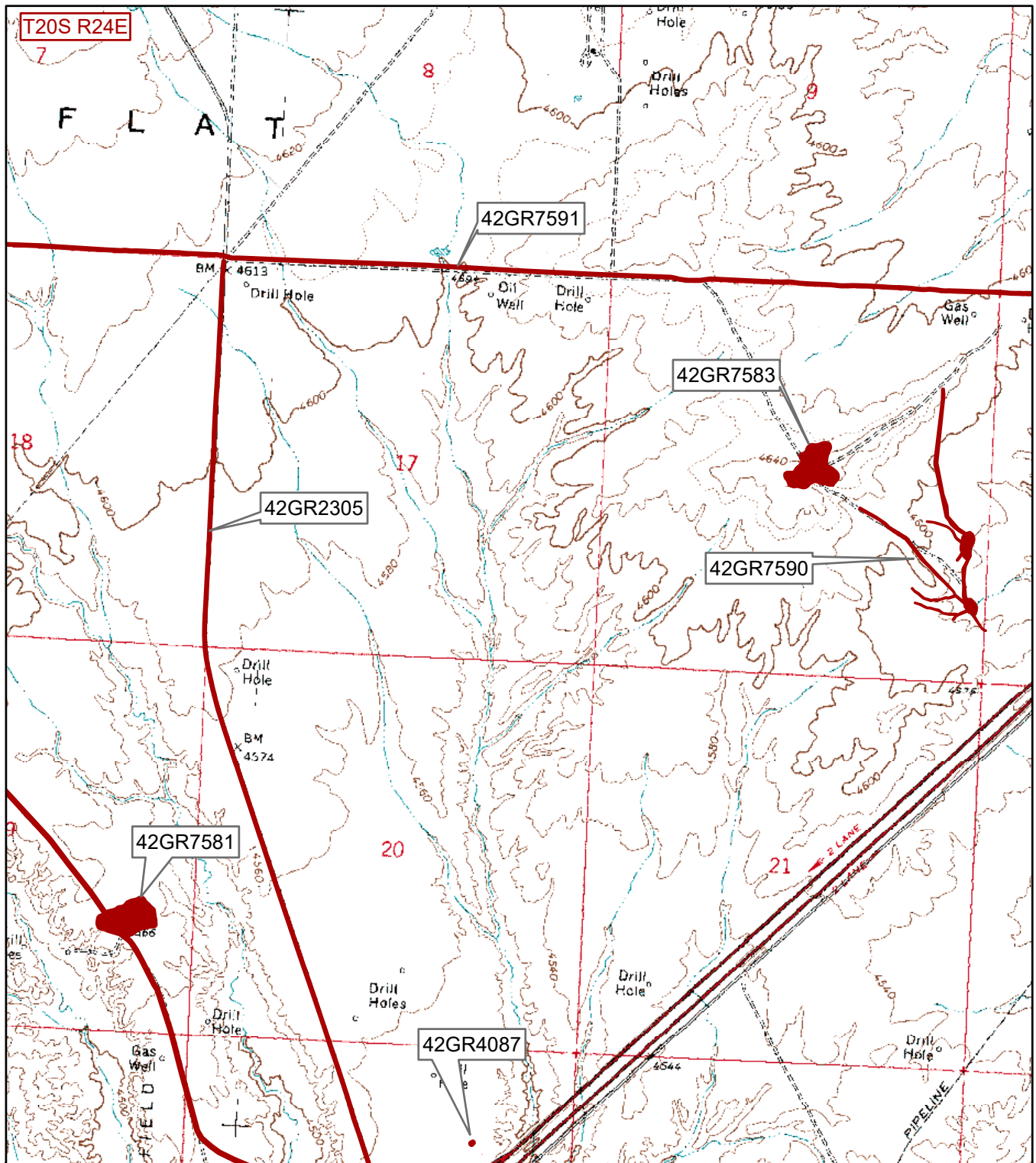
Location of sites located during the Cisco Spring 2D Seismic Project. Taken from the USG 7.5' Quadrangles Danish Flat, Utah (1970) and Cisco, Utah (1970).



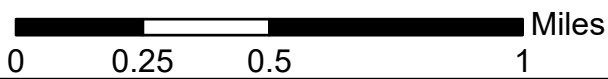
1:24,000



Location of sites located during the Cisco Spring 2D Seismic Project. Taken from the USGS 7.5' Quadrangle Danish Flat, Utah (1970).



1:24,000



Location of sites located during the Cisco Spring 2D Seismic Project. Taken from the USGS 7.5' Quadrangle Danish Flat, Utah (1970).



**Site 42GR7591.** Site overview showing west end of segment; view to the west-southwest.



**Site 42GR7591.** Site overview showing road stretching out across Danish Flat from the west end of segment; view to the east-northeast.





**Site 42GR7591.** Site overview showing improved area near a cell tower and the Danish Flat evaporation ponds; view to the west.



**Site 42GR7591.** Site overview center of segment crossing Danish Flat; view to the east.



**Site 42GR7591.** Overview of eastern end of recorded segment looking toward area where road dies out in abandoned oil field; view to east.



**Site 42GR7591.** Overview from east end of segment; view to the west.