

UTAH ARCHAEOLOGY SITE FORM

PART A – Administrative Data

- 1. **Smithsonian Trinomial:** 42GR7583
- 2. **Temporary Site No.:** JR6
- 3. **Site Name:**

- 4. **Date Recorded:** 8/31/2020
- 5. **Type of Recording:** First Recording Full Re-record Update
- 6. **Project Name:** A Cultural Resources Inventory of the Cisco Spring 2D Seismic Project in Grand County, Utah
- 7. **State Project Number:** U20HP00620
- 8. **Land Status:** State (SITLA)
- 9. **USGS 7.5' Quad Map Name and Date:** Danish Flat (1970)
- 10. **Township:** 20S, **Range:** 24E, **Section:** 16, (1/4): CT **County:** Grand
- 11. **Meridian:** Salt Lake Uintah
- 12. **UTMS:** Zone 12 649990 mE 4325651 mN **NAD:** 83
- 13. **Site Dimensions: Length:** 175 m **Width:** 225 m **Area:** 25,900 m² GIS Estimate
- 14. **Site Class^a:** Prehistoric Protohistoric Historic
- 15. **Site Type:** Prehistoric/Ethnohistoric Historic
 - Long-Term Residential Task Specific Domestic Transportation/Communication
 - Temporary Camp Specialty Site Agriculture/Subsistence Defense
 - Unknown (sites in which the primary pattern of Use is prehistoric or ethnohistoric, but the nature of Use cannot be confidently determined) Industry/Processing/Extraction Unknown
 - Other Other^b
- 16. **Site Characteristics^a:** Artifact Scatter Rock Art/Inscription Lithic Source/Quarry Rock Shelter/Cave
 Architectural Feature(s) Non-Architectural Feature(s) Linear
- 17. **Impacting Agents:** None Erosion Livestock Concentration Recreation Road/Trail Vandalism/Looting
 Other: The site has been modified and is continued use
- 18. **Site Condition:** Stable Deteriorating Imminently Threatened Destroyed
- 19. **Description (as needed):** Continued modification and heavy livestock trampling have destroyed the historic features at this site. Historic features have been dismantled and the continued used has compromised the historic feel and character of the site.
- 20. **Recorded by:** John Rasmussen **21. Organization:** Commonwealth Heritage Group, Inc. (CHG)
- 22. **Material Collected:** No Yes (describe in Site Description) **Repository:** N/A

NRHP Evaluation

- 23. **Is the Site Significant:** No Yes, under criterion^a:
 A (event) B (person) C (design/construction) D (important information)
- 24. **Does it Retain Integrity:** No Yes, aspects present^a:
 Location Design Setting Materials Workmanship Feeling Association
- 25. **NRHP Status:** Not eligible Eligible Listed

Justification (include discussion of historic context, significance, and integrity): This site is a ranching outpost with a corral, covered well, a depression, a possible second dismantled corral, and a widely dispersed historic and modern artifact scatter. This site retains integrity of location, setting, feeling, association, and some materials. The integrity of design and workmanship have been impacted by the dismantling of the well and the second corral. The remaining corral feature has been almost completely replaced with modern materials. Further, the depression has been heavily eroded due to the use of a modern road above it. This site cannot be associated with an important event or person in history, nor does it represent the distinctive characteristics of a type, period, or method of construction or the work of a master. Therefore, this site is recommended Not Eligible to the NRHP under Criteria A, B, or C. Additionally, the site does not appear to contain intact subsurface cultural deposits. Therefore, it is not likely to yield information important to the history of the area. As such, this site is recommended Not Eligible to the NRHP under Criterion D.

- 1. **Site Description** (interpretation, context, size, artifact and feature assemblage, dating, previous works and curation, etc.): This site is an historic/modern ranching activity site located on the top of a knoll on the southeastern side of Danish Flat. Diagnostic artifacts at the site date from the 1920s to modern times, with a mean date of about 1955. The features at the site include a covered well (F1), a corral (F2), a depression (F3), a burn stain (F4), and an upright railroad tie post surrounded by dismantled corral materials (F5). There are four guywire anchors surrounding the covered well, that possibly supported a windmill. The well is sealed with four railroad ties covered by a metal 4½ x 2 ft metal

^aCheck all that apply

^bSee manual for additional categories

1. **Smithsonian Trinomial:** 42GR7583
2. **Temporary Site No.:** JR6

panel. The guywire anchors are heavy braided steel cable anchored in the ground at four points centered over the well area measuring 140 x 50 ft. F2, the corral, is continuously maintained and used (for what appears to be shepherding activities). The depression feature (F3) is located below a modern dirt road and has sediments from upslope eroding into it. Charcoal fragments were noted in F4, the burn stain, which measures 13 x 8 ft. However, no other artifacts were noted in the area. F5, the railroad tie post may represent a second, dismantled, corral. The site is crossed by two graded and maintained dirt roads, making it easy for cattle trucks and other vehicles to access the site. Artifacts at the site include cans and glass. Cans observed at the site include sanitary, hole-in-top, beer cans, tobacco tins, a lard pail, and an oil can. The cans appear to span time and are in varying stages of decay. Glass bottles at this site include both historic and modern glass. Historic trademarks observed include: three occurrences (G1, G4, and G5) with the Owens-Illinois “Diamond/Oval/I” trademark dates from ca. 1929 to the mid-1950s (Whitten 2020); a clear base fragment (G2) with The Owens-Illinois “I inside an O” trademark which represents the Owens-Illinois Glass Company and was used beginning in the mid-1950s to the modern period (Lockhart and Hoenig 2015:9).

26. Environmental Context (topography, vegetation, ground visibility, depositional context): The site is located on a knoll on the southeastern margin of Danish Flat at 4,640 ft asl. Sediments are light tan silty sands with a low content of rounded gravels. The vegetation is a sparse shadscale community with an understory of cheat grass. Ground visibility is good.

27. Notes Regarding Access (as needed):

28. Additional Part A Comments:

^aCheck all that apply

^bSee manual for additional categories

- 2. **Primary date of site use: 1920s – 1950s**
- 3. **Secondary dates of site use: 1960s to present**

4. **Architectural Features:**

Type	Description
Corral (F2)	Corral constructed of modern and historic materials; 100 ft x 90 ft with 50 ft long fenceline off SW corner. Post are modern metal T-posts and railroad ties connected with sheep wire and barbed wire.
Depression (F3)	Depression feature in slope of knoll, 25 ft x 25 ft and ~ 3.5 ft BMGS; two rough-hewn juniper post located in north and south corners; feature impacted by modern road upslope and erosion. Majority of site artifacts are scattered around and downslope from this feature

5. **Non-Architectural Features:**

Type	Description
Well (F1)	Covered well with guywire anchors, possibly to have supported a windmill. Well is 20 ft D area sealed with 4 railroad ties covered by a metal 4.5 ft x 2 ft metal panel. The guywire anchors are heavy braided steel cable anchored in the ground at four points centered over the well area 140 ft (N-S) x 50 ft (E-W).
Burn stain (F4)	Dark soil stain with some charcoal fragments covering 13 ft x 8 ft area
Post (F5)	Railroad tie post set upright, top wrapped with barbed wire and sheep wire. Appears to be part of dismantled corral. Ground around post scattered with lumber, wood fragments, and modern trash.

- 6. **Feature Comments:** The site features include an abandoned well (F1), a corral (F2), a depression (F3), a burn stain (F4), and an upright railroad tie post surrounded by dismantled corral materials (F5). The collapsed well appears to have been a water well and is completely dismantled and covered. The corral is continually maintained and used for what appears to be sheepherding activities. The depression feature sits below a modern dirt road and has sediments from upslope eroding into it. The soil stain appears to be a burned area, but no specific purpose was identified. The stain does not have any artifacts in association. The railroad tie post may represent another corral or a loading chute location that has been dismantled. The features are all located on the top of a knoll which is crossed by two graded and maintained dirt roads. It appears likely that large trucks load/unload livestock at this corral as herds are moved between seasonal ranges.

7. **Cans – Total Quantity:** 65 (estimate)

Quantity	Type	Description
40	Sanitary	Various sizes, food cans; some corrugated sides
15	Hole-in-top	Various sizes, milk cans, knife and ice-pick punched; several crushed
6	Beer cans	Steel beer cans, church-key openings
2 (TC2)	Tobacco tins	Standard hinged-lid pocket tins; one embossed <i>PRINCE ALBERT / NET WT – 1 5/8 OZ.</i>
1	Lard pail	Crushed
1	Oil can	Crushed
1	Sanitary	Modified, punctured to create sieve

- 8. **Can Comments:** Cans observed at the site include sanitary, hole-in-top, beer cans, tobacco tins, a lard pail, and an oil can. The cans appear to span time and are in varying stages of decay.

9. Glass Bottles – Total ENV: 13

ENV	Manufacturing Method	Description
1 (G1)	Automated	Brown glass bottle base fragment with Owens-Illinois “Diamond/Oval/I” trademark and a circle with the number <i>D II / 65-44</i>
1 (G2)	Automated	Clear partial base fragment embossed with Owens-Illinois “I inside an O” trademark flanked by 9 and 6 with 18. Underneath
1	Automated	Brown glass beer bottle, 2½” D x 8” H w/ 1” D finish; embossed around body bottom <i>A 1 REG U.S. PAT. & T.M. OFF A PLEASE DON’T LITTER 81 AND 12</i> on base with 3 concentric circles and ribbed edge; likely modern
1 (G3)	Automated	Green glass mentholatum jar, 1½” D x 2” H; embossed on base with <i>MENTHOLATUM / 7. REG / TRADE / MARK</i>
1 (G4)	Automated	Clear glass fragments; base embossed with Owens-Illinois “Diamond/Oval/I” and number 2; 4 fragments
1 (G5)	Automated	Clear base fragment, opalized; embossed with the Owens-Illinois “Diamond/Oval/I” flanked by 2. and 3 with partial letter

10. **Glass Bottle Comments:** Glass bottles as this site include both historic and modern glass. Historic trademarks observed include: three occurrences (G1, G4, and G5) with the Owens-Illinois “Diamond/Oval/I” trademark dates from ca. 1929 to the mid-1950s (Whitten 2020); a clear base fragment (G2) with The Owens-Illinois “I inside an O” trademark which represents the Owens-Illinois Glass Company and was used beginning in the mid-1950s to the modern period (Lockhart and Hoenig 2015:9).

11. Ceramics – Total ENV:

ENV	Ware	Description

12. Ceramic Comments:

13. Additional Artifacts/Debris:

- Ammunition/Firearms
- Car/Car parts
- Glass (non-bottle)
- Nails (wire)
- Toys
- Bone
- Ceramics (non-tableware)
- Hardware
- Plastic
- Other
- Building Materials
- Clothing
- Nails (cut)
- Stove Parts

14. Additional Artifact/Debris Description:

15. Additional Part C Comments:

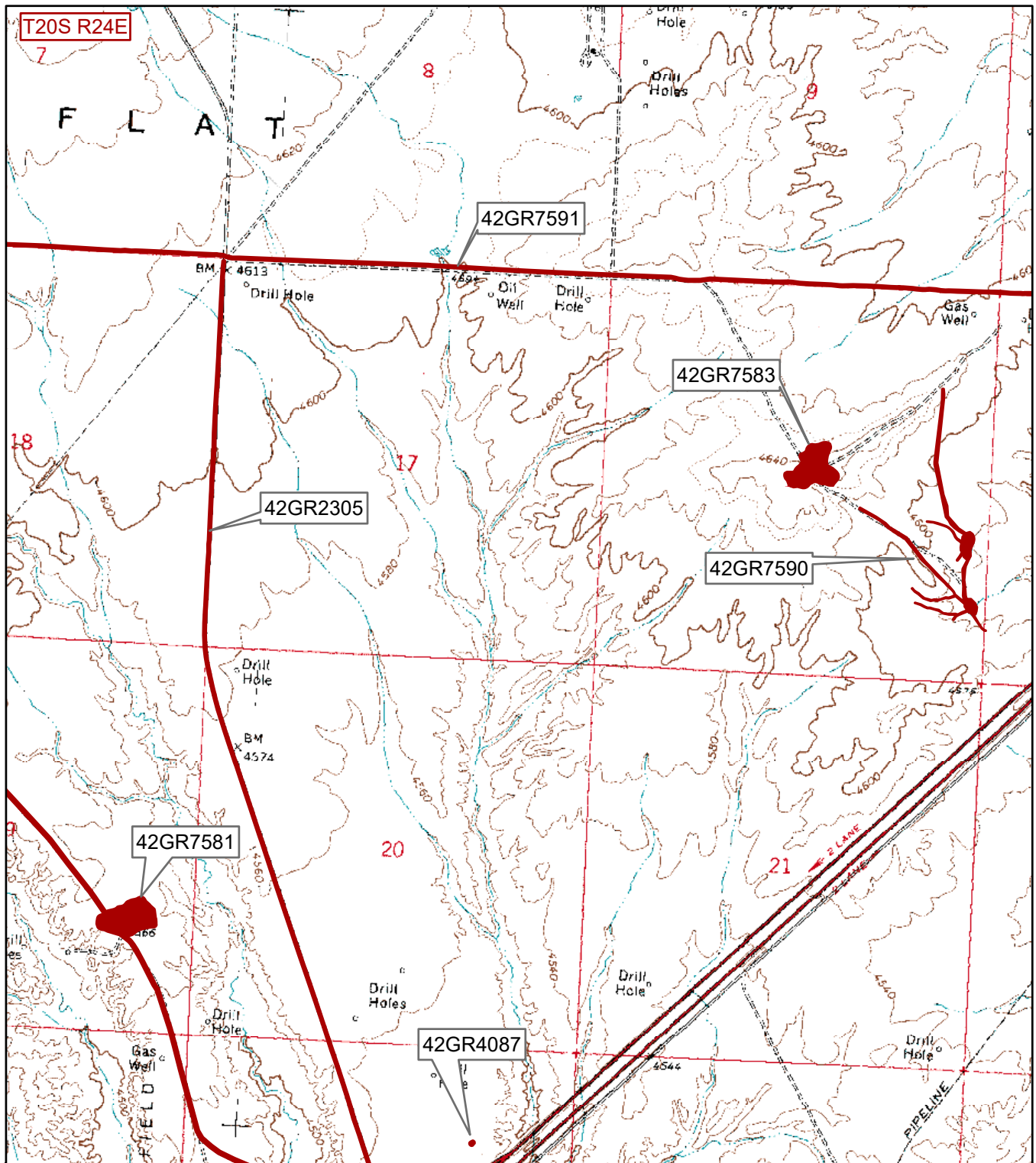
References Cited:

Lockhart, Bill and Russ Hoening

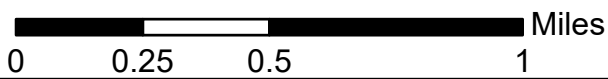
The Bewildering Array of Owens-Illinois Glass Co. Logos and Codes. Electronic document, <https://sha.org/bottle/pdf/OWensIllinois2015.pdf>, accessed September 19, 2020.

Whitten, David

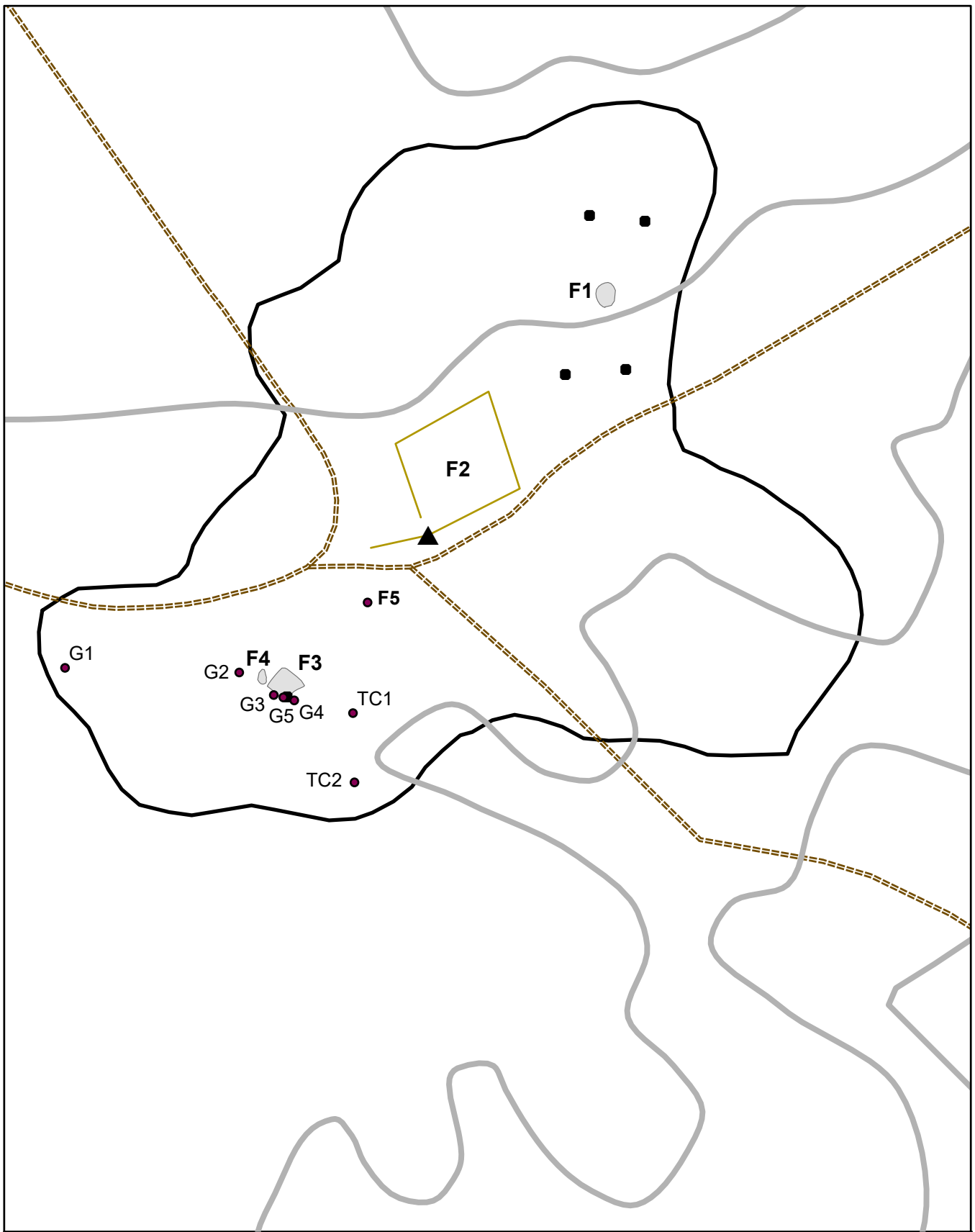
2020 Glass Bottle Marks. Electronic document, <https://www.glassbottlemarks.com/>, accessed September 19, 2020.



1:24,000



Location of sites located during the Cisco Spring 2D Seismic Project. Taken from the USGS 7.5' Quadrangle Danish Flat, Utah (1970).



Site 42GR7583



Site 42GR7583. Site overview from northeast edge; view to the southwest.



Site 42GR7583. Site overview from west side showing road to corral; view to the east.



Site 42GR7583. F1, abandoned well location; view to the north.



Site 42GR7583. F1, guywire anchor; close-up view.



Site 42GR7583. F2, corral overview from southwest side; view to the northeast.



Site 42GR7583. F3, depression feature; view to the northeast showing juniper post on north side.



Site 42GR7583. F4, soil stain; close-up view.



Site 42GR7583. F5, railroad tie post and corral debris; close-up view.



Site 42GR7583. TC1, modified tin can; close-up view.



Site 42GR7583. TC2, *Prince Albert* embossed tobacco tin; close-up view.



Site 42GR7583. G1, Owens-Illinois “Diamond/Oval/I” trademark; close-up view.



Site 42GR7583. G2, Owens-Illinois “I inside an O” trademark on clear glass base fragment; close-up view.



Site 42GR7583. G3, *MENTHOLATUM* bottle; close-up view.



Site 42GR7583. G4, clear glass fragments and base fragment with Owens-Illinois "Diamond/Oval/I" trademark; close-up view.



Site 42GR7583. G5, opalized clear base fragment with the Owens-Illinois “Diamond/Oval/I” trademark; close-up view.



Site 42GR7583. Representative steel beer can; close-up view.