

- 1. **Smithsonian Trinomial:** 42GR7581
- 2. **Temporary Site No.:** HS-S2
- 3. **Site Name:**

- 4. **Date Recorded:**
- 5. **Type of Recording:** First Recording Full Re-record Update
- 6. **Project Name:** A Cultural Resources Inventory of the Cisco Spring 2D Seismic Project in Grand County, Utah
- 7. **State Project Number:** U20HP00620
- 8. **Land Status:** BLM (Moab Field Office)
- 9. **USGS 7.5' Quad Map Name and Date:** Danish Flat (1970)
- 10. **Township:** 20S, **Range:** 24E, **Section:** 19, **SE (1/4):** **County:** Grand
- 11. **Meridian:** Salt Lake Uintah
- 12. **UTMS:** Zone 12 647246 mE 4323612 mN **NAD:** 83
- 13. **Site Dimensions:** **Length:** 159.28 m **Width:** 251m **Area:** 26,888 m2 GIS Estimate
- 14. **Site Class^a:** Prehistoric Protohistoric Historic
- 15. **Site Type:** Prehistoric/Ethnohistoric Historic
 - Long-Term Residential Task Specific Domestic Transportation/Communication
 - Temporary Camp Specialty Site Agriculture/Subsistence Defense
 - Unknown (sites in which the primary pattern of Use is prehistoric or ethnohistoric, but the nature of Use cannot be confidently determined) Industry/Processing/Extraction
 - Other Unknown
 - Other Other^b
- 16. **Site Characteristics^a:** Artifact Scatter Rock Art/Inscription Lithic Source/Quarry Rock Shelter/Cave
 Architectural Feature(s) Non-Architectural Feature(s) Linear
- 17. **Impacting Agents:** None Erosion Livestock Concentration Recreation Road/Trail Vandalism/Looting
 Other:
- 18. **Site Condition:** Stable Deteriorating Imminently Threatened Destroyed
- 19. **Description** (as needed): The site has been impacted by the construction of a modern road and, what appears to be, erosion control features through the site. It has also been impacted by dismantling of structures, erosion, and general long-term disuse.
- 20. **Recorded by:** John Rasmussen **21. Organization:** Commonwealth Heritage Group, Inc. (CHG)
- 22. **Material Collected:** No Yes (describe in Site Description) **Repository:** N/A
- NRHP Evaluation**
- 23. **Is the Site Significant:** No Yes, under criterion^a:
 A (event) B (person) C (design/construction) D (important information)
- 24. **Does it Retain Integrity:** No Yes, aspects present^a:
 Location Design Setting Materials Workmanship Feeling Association
- 25. **NRHP Status:** Not eligible Eligible Listed
- 26. **Justification** (include discussion of historic context, significance, and integrity): This site has been impacted by dismantling, abandonment, and the construction of a new road through the site. However, the site still retains integrity of location, setting, materials, feeling, and association; the necessary aspects of integrity needed to convey its significance. This site cannot be associated with a specific event or person important in the history of the region, nor does it embody the characteristics of a type, period, or method of construction. Therefore, Commonwealth recommends this site Not Eligible to the NRHP under Criteria A, B, and C. However, this site does have potential to contain intact cultural deposits that could yield information important to the history of the region. Therefore, Commonwealth recommends this site Eligible to the NRHP under Criterion D.
- 27. **Site Description** (interpretation, context, size, artifact and feature assemblage, dating, previous works and curation, etc.): This historic site appears to consist of two loci, an industrial and a domestic locus. Two rock-lined footpaths connect the two loci. The site consists of a long-term residential domestic habitation and an industrial processing area located on Danish Flat and measures 251 x 159 m. There are 11 features consisting of various dugouts, depressions, concrete pads, or foundations, all located along a historic road. The industrial processing area in the western portion of the site is characterized by concrete platforms, concrete foot pads, hardware and large amounts of burnt material from the industrial processing. A portion of a broken piece of concrete pad has an inscription that reads: "CISCO 1940 P.A. Mike Wasko N.J. Mike S. . .". Also along the far western site boundary is a concentration of domestic artifacts such as tin cans, glass, and ceramics. The cans are mainly hole-in-top with "punch here" embossed on the lid. The

^aCheck all that apply

^bSee manual for additional categories

1. **Smithsonian Trinomial:** 42GR7581
2. **Temporary Site No.:** HS-S2

residential areas in the east end of the site are characterized by an abundance of cans, plate glass, insulator fragments, and an electrical pole stump, suggesting that this part of the site had electrical access.

28. Environmental Context (topography, vegetation, ground visibility, depositional context): This site is located on a flat, even part of Danish Flat. Vegetation present is consistent with a shadscale community. Soils are a light tan silty soil with small rocks and pebbles. Also present is an abundance of large sandstone cobbles and medium-sized stones. Soil is hard-packed at the edges of the depressions or dugouts.

29. Notes Regarding Access (as needed):

30. Additional Part A Comments:

^aCheck all that apply

^bSee manual for additional categories

1. **Primary date of site use:** 1940s
2. **Secondary dates of site use:** N/A
3. **Architectural Features:**

Type	Description
N/A	

4. **Non-Architectural Features:**

	Type	Description
F1	Artifact concentration	Historic Trash Concentration measuring 19½ x 25½ ft. Artifacts include cans, metal mesh, straight wire, a shoe sole, a metal sheet, clear glass with two makers marks and ceramics with one makers mark.
F2	Slag mound	This feature consists of a burnt mound of slag and other materials that measures 20 x 20 ft. It appears to be the by-product of the industrial operation at the site. It has a ring-shaped raised area surrounding a shallow depression that is mostly blackened.
F3	Rock-lined dugout	This feature is a rock-lined dugout measuring 18 x 27½ ft. It is about 3 ft deep and is likely connected to the industrial operation nearby. It is lined with large sandstone rocks and the bottom is heavily overgrown. There are several wire nails located within the feature and surrounding the mound.
F4	Large circular dugout with concrete platform and pads	This is a large, circular dugout with a concrete platform on the northeast edge. There are two poured concrete pads on the platforms. The dugout measures 35½ x 24 ft and is about 4 ft deep. The bottom is heavily overgrown with vegetation. The concrete platform measures 7½ in thick and is deteriorating. One of the concrete pads measures 6¾ in high on the sides with lips, and 6 in high on side without lip, 2 ft wide and 29½ in long. The inner area of this pad slightly basins toward the center while the other is flat. Both pads have “seats” with only 3 lips. The flat pad has small notches along one side, while the basined pad does not. On the flat pad, the inner walls measure 2¼ in with the lipped wall measuring 7¾ in high on the sides with walls while the side with no lip measures 6 in high. The concrete pad rests on a platform of large sandstone rocks.
F5	Concrete pad with stone border	This feature consists of a concrete pad bordered by a rectangle of stones. It has two notches on the eastern side and rests of a platform of large sandstone rocks. A plough line acting as a possible diversion channel has impacted the lines stones, breaking the eastern line. The concrete pad measures 19 x 8 ft.
F6	Rock pile	This is a rock pile composed of 9 large sandstone cobbles.
F7	Circular dugout	This is a circular dugout measuring 15½ x 18 ft. Approximately 20 large sandstone cobbles are grouped on the southwestern edge about 5 feet from the dugout. There are some wooden planks lying partially in the dugout and nearby. Additionally, there is a small rectangular platform composed of very small stones and cobbles measuring 4½ x 7½ ft. The bottom of the dugout is heavily overgrown but appears to measure about 3 ft deep.
F8	Dugout	This is a dugout pit measuring 31¾ x 15¼ ft. The bottom is heavily overgrown and appears to measure about 2 ft deep. There is a back-dirt pile rising about a foot above the surrounding area and is void of vegetation. A rock-lined path begins at the western edge of the pit and extends to the modern road, where it was obliterated by the road.
F9	Shallow depression	This is a shallow, 2 ft deep depression measuring 14 x 15¼ ft. It is aligned with and near two other features; a large dugout (F8) and a second shallow depression (F10). The bottom is heavily overgrown.
F10	Shallow depression	This is a shallow, 2 ft deep depression that measures 12 x 15½ ft. It is aligned and located near features F8 and F9. The bottom is heavily overgrown.

F11	Artifact concentration	This feature measures 20 x 29 ft and consists of an artifact concentration. This includes plate glass, cans, concrete, jar fragments, crushed sanitary cans, a m paint can, slag, hanger fragment, and insulator fragments.
------------	------------------------	---

5. **Feature Comments:** There are 11 features consisting of various, dugouts, depressions and concrete pads or foundations located along a historic road.

6. **Cans – Total Quantity:** about 51

Quantity	Type	Description
In Feature 1		
4	Sanitary	Cut-around 6½ in d x 7 in h
7	Sanitary	Cut-around 3½ in d x 4½ in h
4	Sanitary	Cut-around 4 in d x 4½ in h
10	Sanitary	Crushed embossed lettering “PUNCH HERE”
1	Hole-in-top	Knife-punch 3 in d x 4 in h
1	Hole-in-top	Knife punch crushed
Feature 11		
10	Sanitary	Crushed cans
Site-wide		
1	Hole-in-top	Knife-punch 3 in d x 4 in h embossed lettering “PUNCH HERE”
2	Oil cans	
5	Sanitary	Crushed
2	Tobacco tins	Hinged
1	Sanitary	Knife-opened 2¾ in d x 3¾ in h
3	Hole-in-top	Crushed
1	Lid	Star carved into the lid

7. **Can Comments:** Sanitary cans dominated the assembly with hole-in-top common and tobacco, oil and other cans present.

8. **Glass Bottles – Total ENV:**

ENV	Manufacturing Method	Description
FEATURE 1		
1	Automatic	Clear fragments with a partial base
1	Automatic	G1 – Clear glass fragments with a partial base and the mark “1256/G over C/4” from the Glass Container Corp dating from 1934-ca. 1968 (SHA 2020).
1	Automatic	G2 – clear glass with a pinkish tint and the makers mark “26/H over A/0-0863” from the Hazel Atlas glass Co dating from 1923 to ca. 1982 (SHA 2020).
SITE-WIDE		
1	Automatic	Dark aqua glass fragments
1	Automatic	Clear with some patina bottle fragments.

9. **Glass Bottle Comments:** N/A

10. **Ceramics – Total ENV: 1**

ENV	Ware	Description
Feature 1		
1	Porcelain	From a plate with the partial trademark “??GO CHINA/?? ASTLE, PA.” likely Shenango China/New Castle PA which was made from

1901 to 1989.

11. **Ceramic Comments:** A piece of porcelain plate fragment with the partial trademark “??GO CHINA/?? ASTLE, PA.” was noted at this site. This mark is likely from the Shenango China/New Castle PA which was made from 1901 to 1989.

12. **Additional Artifacts/Debris:**

- | | | | | |
|--|---|--|---------------------------------------|---|
| <input type="checkbox"/> Ammunition/Firearms | <input type="checkbox"/> Car/Car parts | <input checked="" type="checkbox"/> Glass (non-bottle) | <input type="checkbox"/> Nails (wire) | <input type="checkbox"/> Toys |
| <input type="checkbox"/> Bone | <input type="checkbox"/> Ceramics (non-tableware) | <input type="checkbox"/> Hardware | <input type="checkbox"/> Plastic | <input checked="" type="checkbox"/> Other |
| <input checked="" type="checkbox"/> Building Materials | <input type="checkbox"/> Clothing | <input checked="" type="checkbox"/> Nails (cut) | <input type="checkbox"/> Stove Parts | |

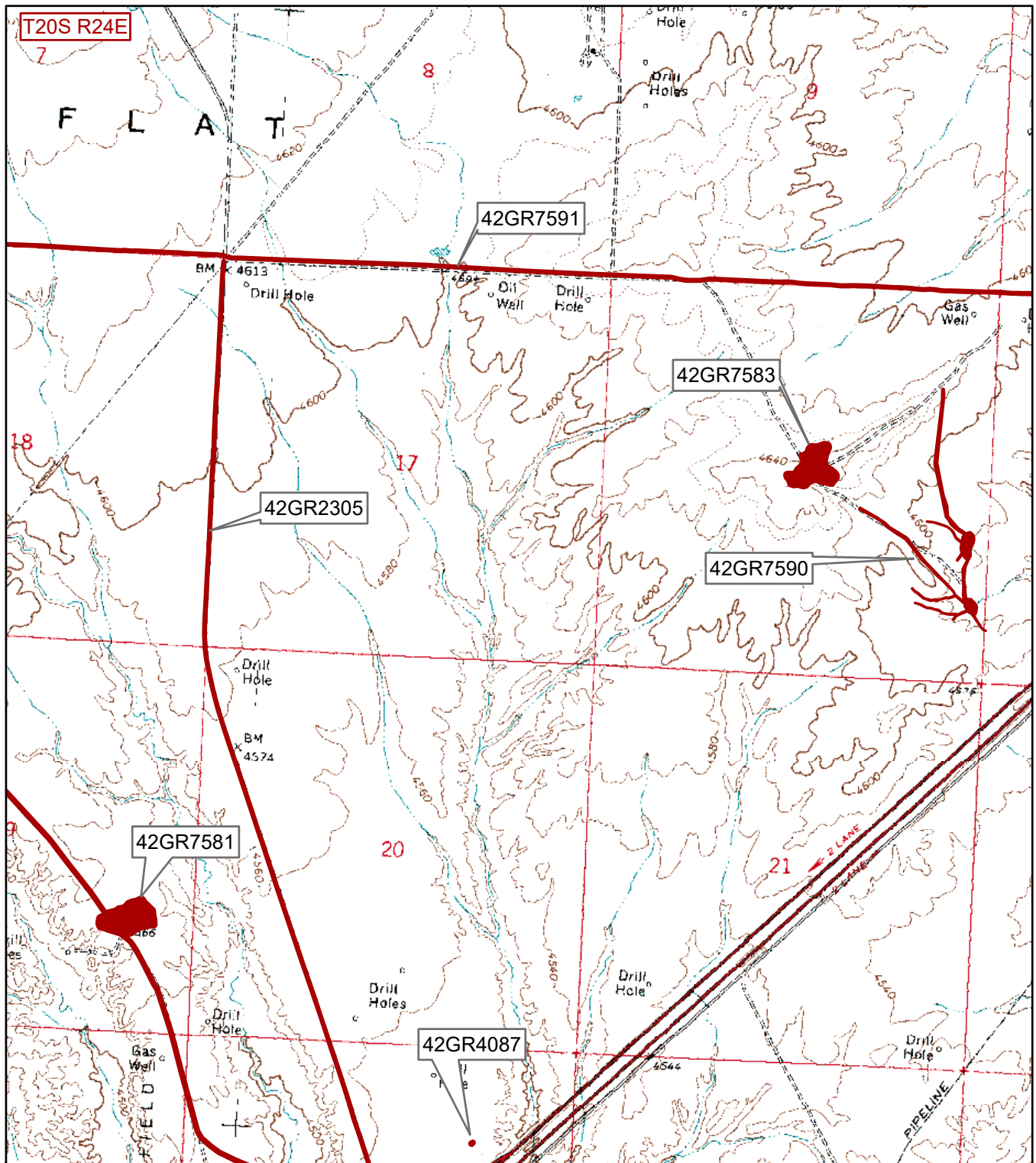
13. **Additional Artifact/Debris Description:** Other artifacts identified at the site include in Feature 1: a shoe sole or heel, metal mesh, straight wire, a metal sheet. A large number of wire nails, about 10, were noted in Feature 3. Throughout the site a coiled spring, metal fragments and a can lid with a star carved into the top (M1) were noted.

14. **Additional Part C Comments:**

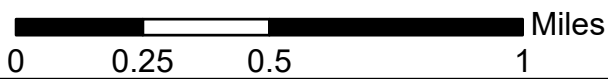
Reference Cited:

Society of Historic Archaeology (SHA)

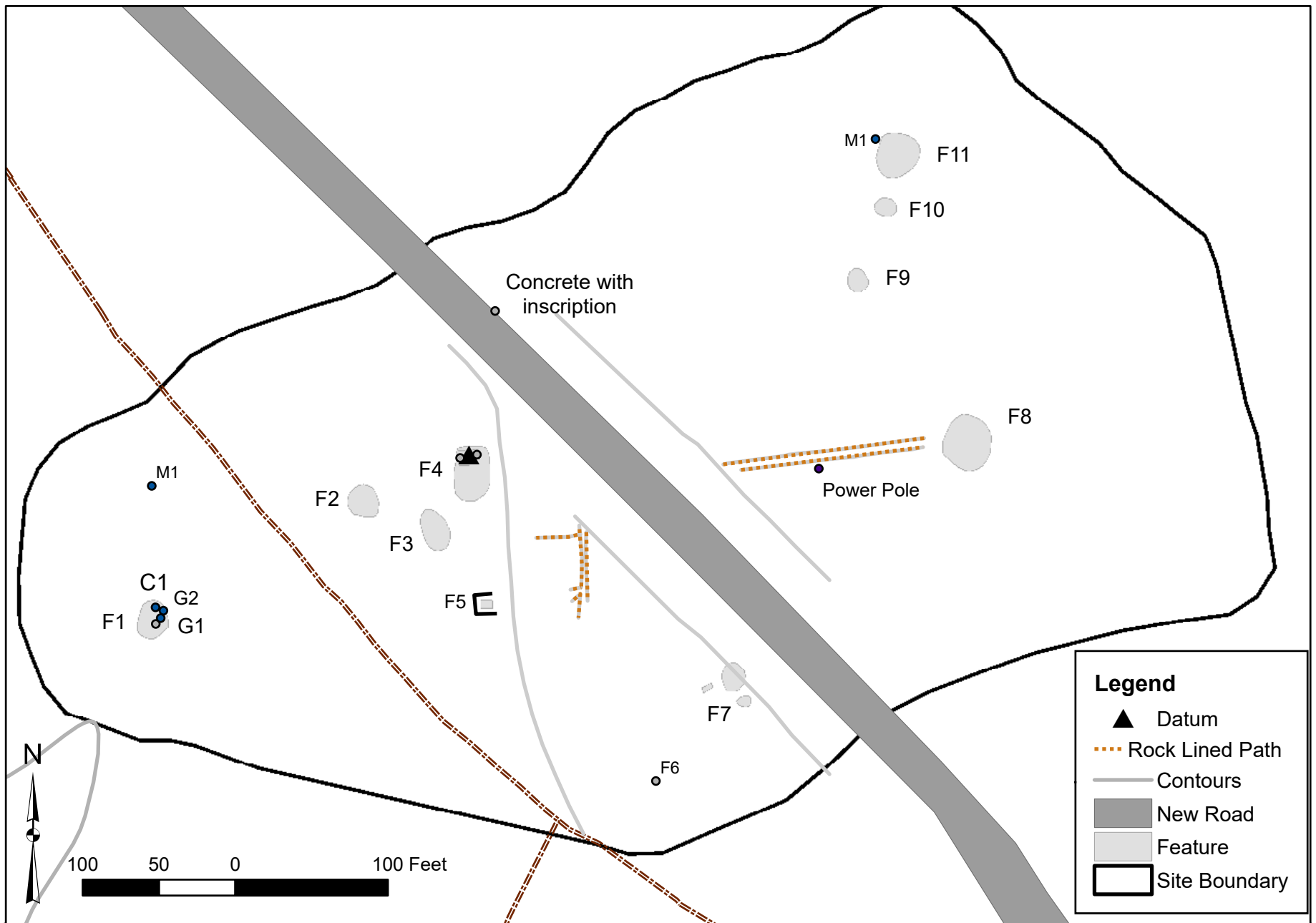
2020 Glassmaking & glass makers: bottle & Glass Makers Markings. Accessed online 10 October at <https://sha.org/bottle/makersmarks.htm>.



1:24,000



Location of sites located during the Cisco Spring 2D Seismic Project. Taken from the USGS 7.5' Quadrangle Danish Flat, Utah (1970).



Legend

- ▲ Datum
- Rock Lined Path
- Contours
- █ New Road
- ▒ Feature
- Site Boundary

100 50 0 100 Feet

Site 42GR7581



Site 42GR7581. Site overview; view to the west.



Site 42GR7581. Site overview; view to the northeast.



Site 42GR7581. F1, artifact concentration; view to the south.



Site 42GR7581. F2, slag mound; view to the southwest.



Site 42GR7581. F3, rock-lined dugout; view to the west.



Site 42GR7581. F4, large circular dugout with concrete platform and pads; view to the northeast.



Site 42GR7581. F4, concrete platform and pads close-up.



Site 42GR7581. F5, concrete pad with stone border close-up.



Site 42GR7581. F6, rock pile close-up.



Site 42GR7581. F7, circular dugout; view to the northwest.



Site 42GR7581. F8, dugout close-up.



Site 42GR7581. F9, shallow depression close-up.



Site 42GR7581. F10, shallow depression close-up.



Site 42GR7581. F11, artifact concentration close-up.



Site 42GR7581. Close-up of rock-lined footpath.



Site 42GR7581. G1, clear glass fragments with a partial base and the mark “1256/G over C/4” from the Glass Container Corp dating from 1934-ca. 1968.



Site 42GR7581. G2, clear glass with a pinkish tint and the makers mark “26/H over A/0-0863” from the Hazel Atlas glass Co dating from 1923 to ca. 1982.



Site 42GR7581. C1, a plate with the partial trademark “??GO CHINA/?? ASTLE, PA.” likely Shenango China/New Castle PA which was made from 1901 to 1989.



Site 42GR7581. M1, a can lid with a star carved into the top.