

3. Site Name:

4. **Date Recorded:** 8/30/2020
5. **Type of Recording:** First Recording Full Re-record Update
6. **Project Name:** A Cultural Resources Inventory of the Cisco Spring 2D Seismic Project in Grand County, Utah
7. **State Project Number:** U20HP00620
8. **Land Status:** Private
9. **USGS 7.5' Quad Map Name and Date:** Danish Flat (1970)
10. **Township:** 20S, **Range:** 23E **Section:** 24, (1/4): SE/NW/NE and NE/SW/NE **County:** Grand
11. **Meridian:** Salt Lake Uintah
12. **UTMS:** Zone 12 645428 mE 4324377 mN **NAD:** 83 (north end north segment)
UTMS: Zone 12 645473 mE 4324298 mN (south end north segment)
UTMS: Zone 12 645439 mE 4324235 mN (north end south segment)
UTMS: Zone 12 645389 mE 4324166 mN (south end south segment)
13. **Site Dimensions: Length:** 183 m **Width:** 2.4 m **Area:** linear m2 GIS Estimate
14. **Site Class^a:** Prehistoric Protohistoric Historic
15. **Site Type:** Prehistoric/Ethnohistoric Historic
 Long-Term Residential Task Specific Domestic Transportation/Communication
 Temporary Camp Specialty Site Agriculture/Subsistence Defense
 Unknown (sites in which the primary pattern of Use is prehistoric or ethnohistoric, but the nature of Use cannot be confidently determined) Industry/Processing/Extraction Unknown
 Other Other^b
16. **Site Characteristics^a:** Artifact Scatter Rock Art/Inscription Lithic Source/Quarry Rock Shelter/Cave
 Architectural Feature(s) Non-Architectural Feature(s) Linear
17. **Impacting Agents:** None Erosion Livestock Concentration Recreation Road/Trail Vandalism/Looting
 Other:
18. **Site Condition:** Stable Deteriorating Imminently Threatened Destroyed
19. **Description** (as needed): This site is an abandoned road segment. The north end of the road has been blocked from vehicle access by a large tree stump and a t-post (now fallen). The road is eroding on the slopes of Danish Wash.
20. **Recorded by:** Sandy Chynoweth Pagano **21. Organization:** Commonwealth Heritage Group, Inc. (CHG)
22. **Material Collected:** No Yes (describe in Site Description) **Repository:** N/A
- NRHP Evaluation**
23. **Is the Site Significant:** No Yes, under criterion^a:
 A (event) B (person) C (design/construction) D (important information)
24. **Does it Retain Integrity:** No Yes, aspects present^a:
 Location Design Setting Materials Workmanship Feeling Association
25. **NRHP Status:** Not eligible Eligible Listed
26. **Justification** (include discussion of historic context, significance, and integrity): This site is a previously recorded abandoned road remnant that served as access to an historic homestead (Site 42GR1274). It was recommended Not Eligible to the NRHP since it was a local access road and not an important thoroughfare. This site has been abandoned and is heavily overgrown, but it still retains integrity of location, setting, materials, feeling, and association. However, the site cannot be associated with an important person, nor does it represent a type, period, or method of construction. Further, this site is not likely to contain intact cultural deposits that could yield information important to the history of the region. Although, this site did serve as access to a homestead that was recommended Eligible under Criterion A for its contribution to the broad patterns of history, the road only served for local access and was not a significant thoroughfare. Therefore, Commonwealth agrees with the previous recommendation of Not Eligible to the NRHP.
27. **Site Description** (interpretation, context, size, artifact and feature assemblage, dating, previous works and curation, etc.): This site is a previously recorded road. The site was originally described in 1982 as a wagon road that accessed the J.A. Johnston homestead (42GR1274) (Babcock, Hartley, and Kimsey 1982). During a site revisit to the homestead in 2008, the road was documented as a separate site (Russell 2008a,b). The road consists of two separate segments of a road that shows up on a 1925 GLO map. As depicted on the GLO, the road connected “J.A. Johnston’s House” (42GR1274) to the main Cisco Springs Road (42GR7592), one quarter of a mile to the north. This road was revisited by Commonwealth in 2020 and found to be as previously described. The road is visible going up both sides of Danish Wash. It does not appear to continue to the south after climbing the wash. The portion north of the wash on the

northern segment was not discernable and has likely been obscured by a modern oil well/pad. No changes are necessary to the original site form with the exception of a more precise occupation date. The historic record indicates the Danish Flat settlement was occupied ca. 1916 until 1930 (Pagano 2020).

28. Environmental Context (topography, vegetation, ground visibility, depositional context): The site is located within and on the sloped banks of Danish Wash at 4,600 ft ASL. The vegetation in the area is a typical desert shadscale community with sparse sagebrush, saltbush, greasewood, and low grasses with some riparian vegetation in the drainage bottom where thick stands of greasewood and tamarisk occur. Sediments are light tan silty sands with a high content of angular and rounded gravels, cobbles, and boulders. Ground visibility is good.

29. Notes Regarding Access (as needed): The site is accessible by foot from a modern oil well about 200 m to the north via Cisco Springs Road.

30. Additional Part A Comments:

References Cited:

Babcock, T., J. Hartley, and M. Kimsey

1982 *Intermountain Antiquities Computer System (IMACS) Form for Site 42GR1274*. Inventory files, Division of State History, Utah State Historic Preservation Office, Salt Lake City.

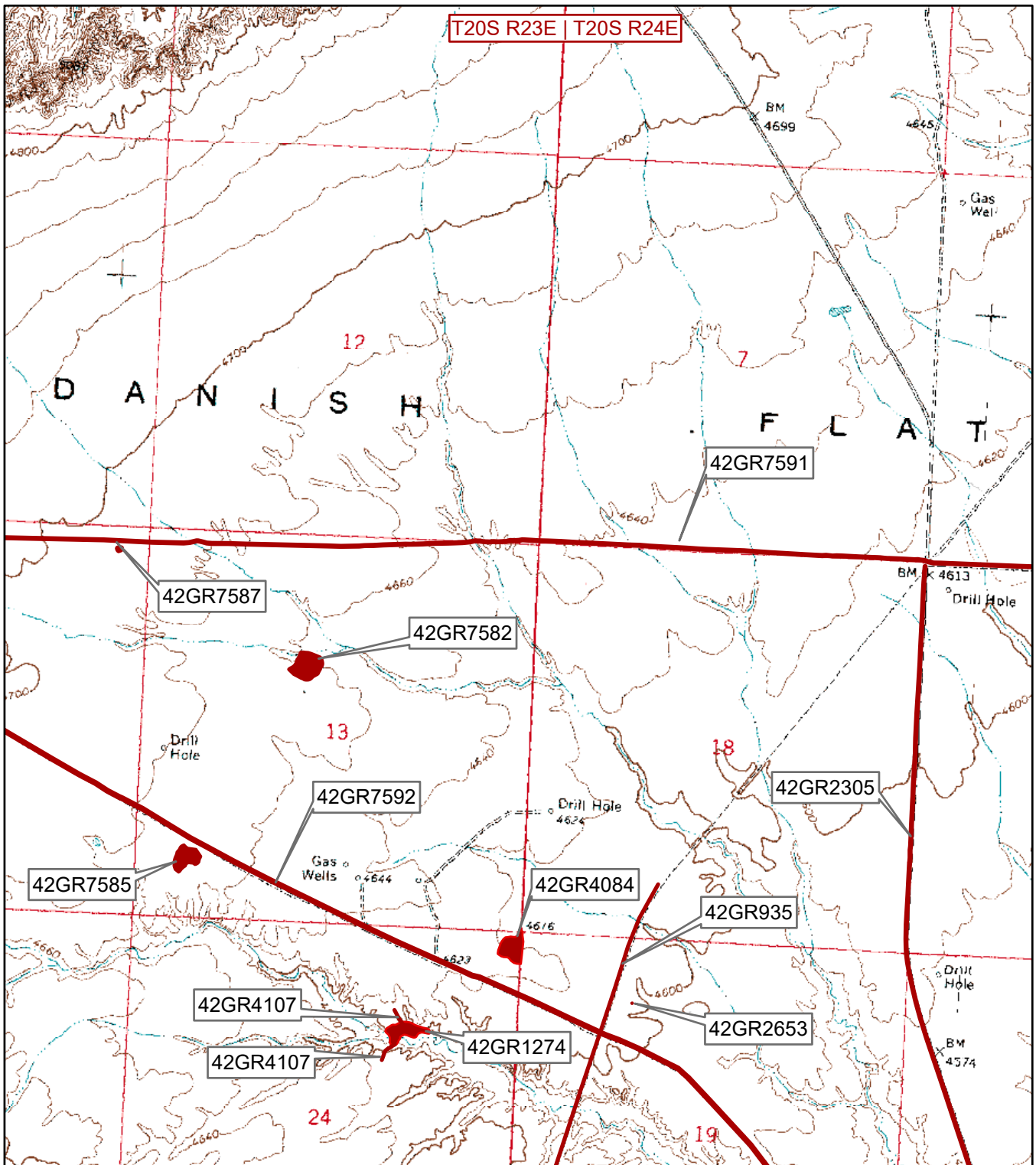
Pagano, Sandy Chynoweth

2020 *Intermountain Antiquities Computer System (IMACS) Form for Site 42GR1274*. Inventory files, Division of State History, Utah State Historic Preservation Office, Salt Lake City.

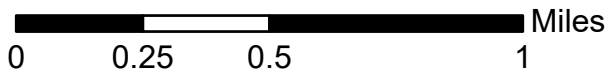
Russell, Hannah

2008a *Intermountain Antiquities Computer System (IMACS) Form for Site 42GR1274*. Inventory files, Division of State History, Utah State Historic Preservation Office, Salt Lake City.

2008 *Intermountain Antiquities Computer System (IMACS) Form for Site 42GR4107*. Inventory files, Division of State History, Utah State Historic Preservation Office, Salt Lake City.



1:24,000



Location of sites located during the Cisco Spring 2D Seismic Project. Taken from the USGS 7.5' Quadrangle Danish Flat, Utah (1970).



Site 42GR4107. Overview showing condition in 2020 on from north end of north segment; view to the southeast showing rock alignment on east edge of road.



Site 42GR4107. Overview of south segment showing road climbing slope of Danish Wash; view to the southwest.